

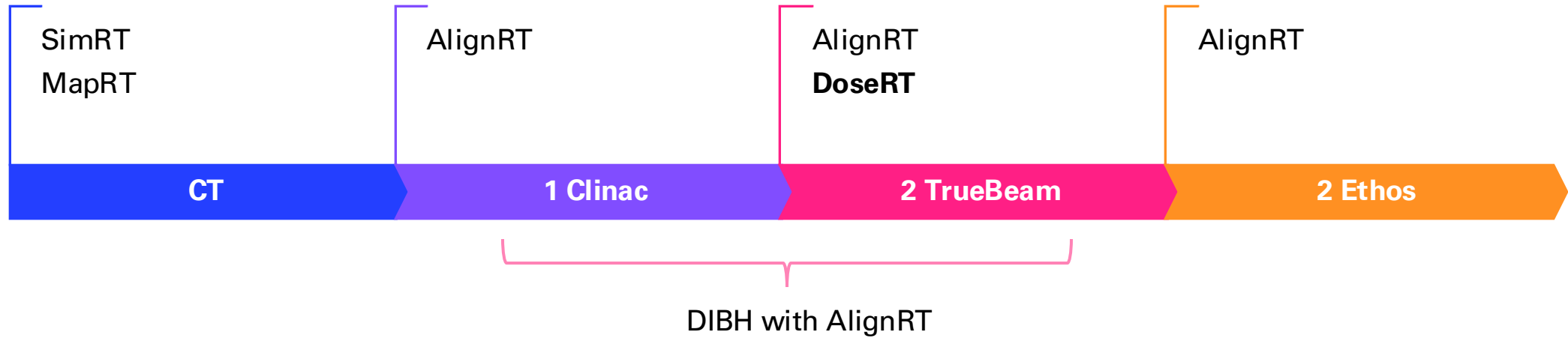
See what you normally cannot see with **DoseRT**: What have we learned?

April 2026



Bettina Skjold Jasper, Medical physicist
& Arpit Saini, Medical physicist
Zealand University Hospital,
Næstved, Denmark

SGRT in Næstved



- Implemented 2025
- Tattoo free

Cherenkov imaging



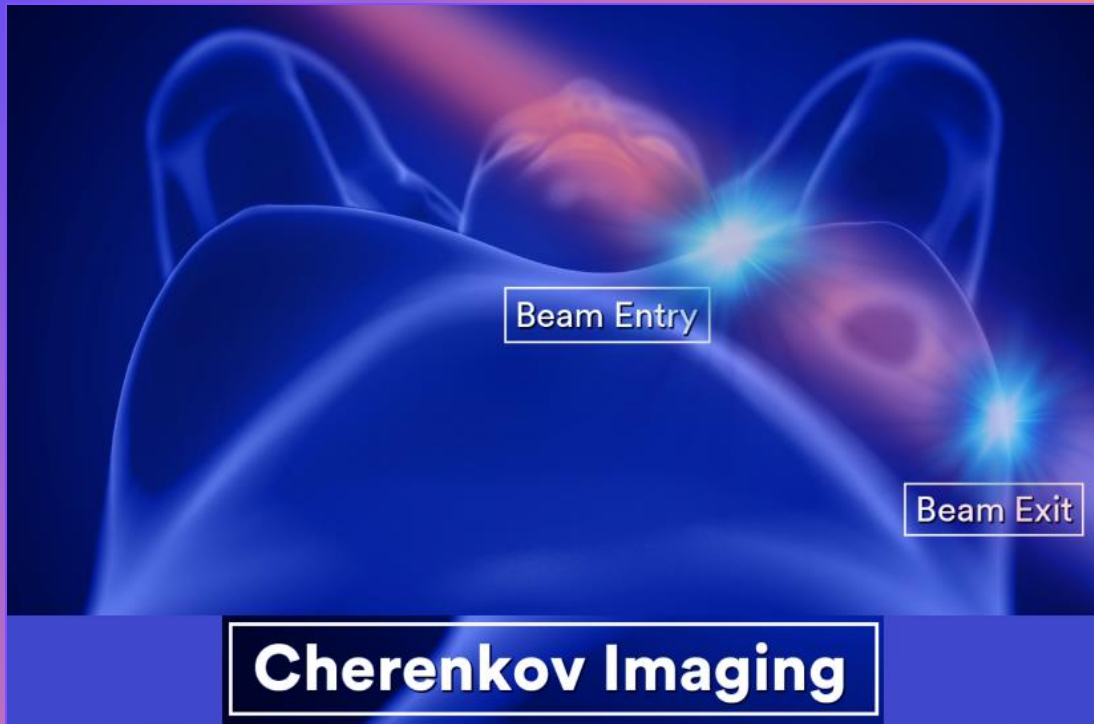


doseRT™
Powered by BeamSite®

DoseRT Næstved

Implementation in the clinic

1. Online
2. Offline by physicist
(new patients)

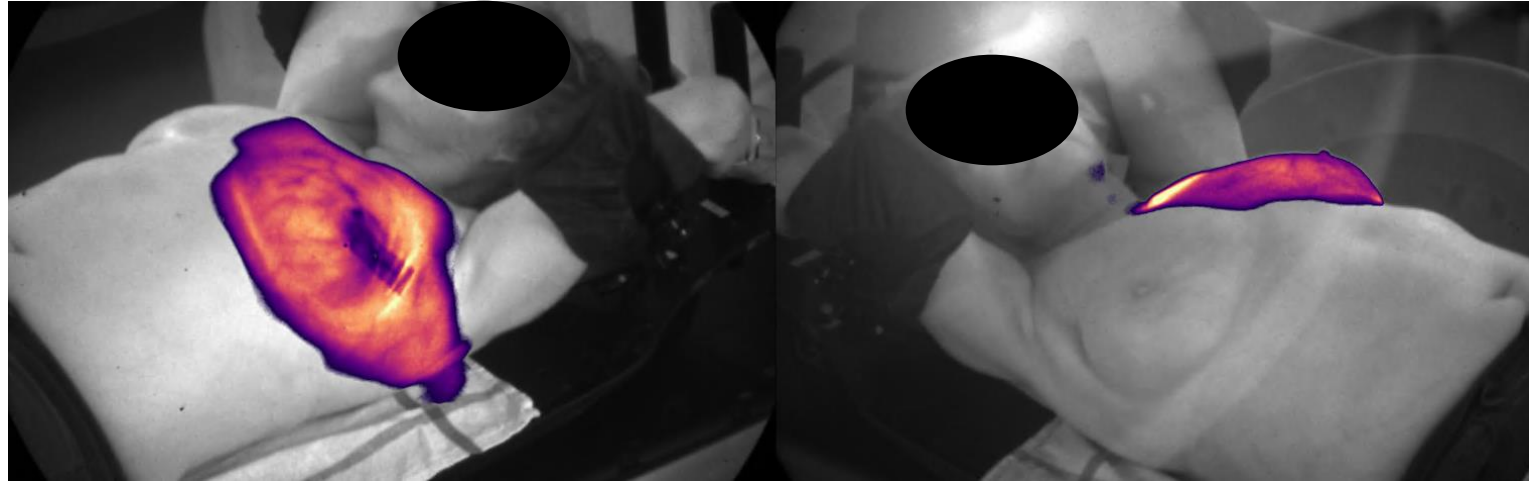




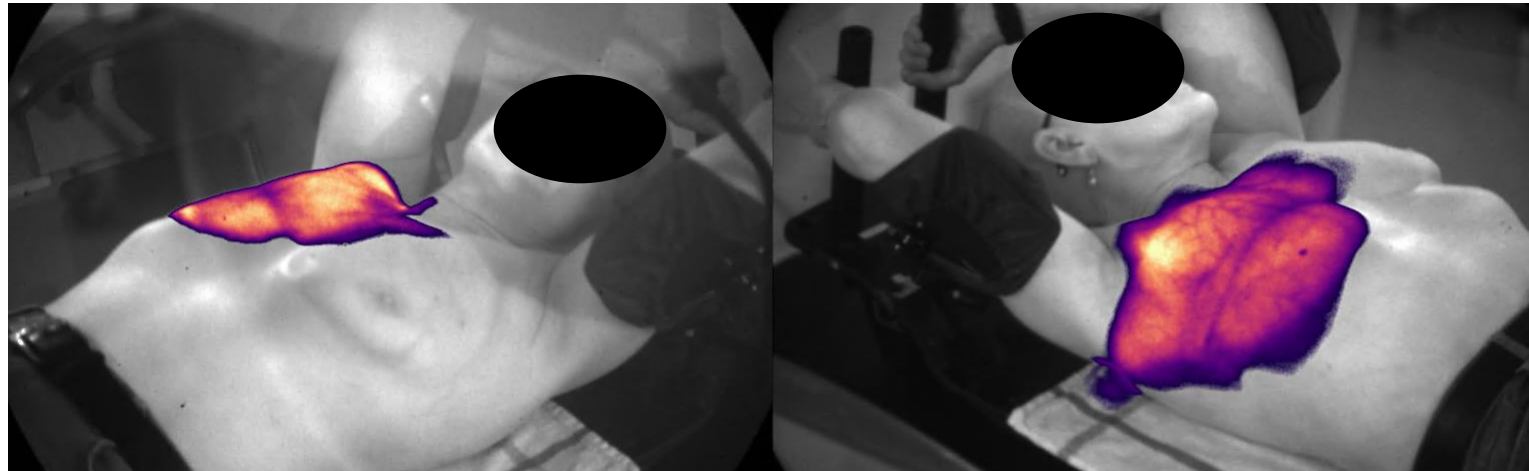
MAMMA CASES

DoseRT: What have we learned?

1: Dose to chin



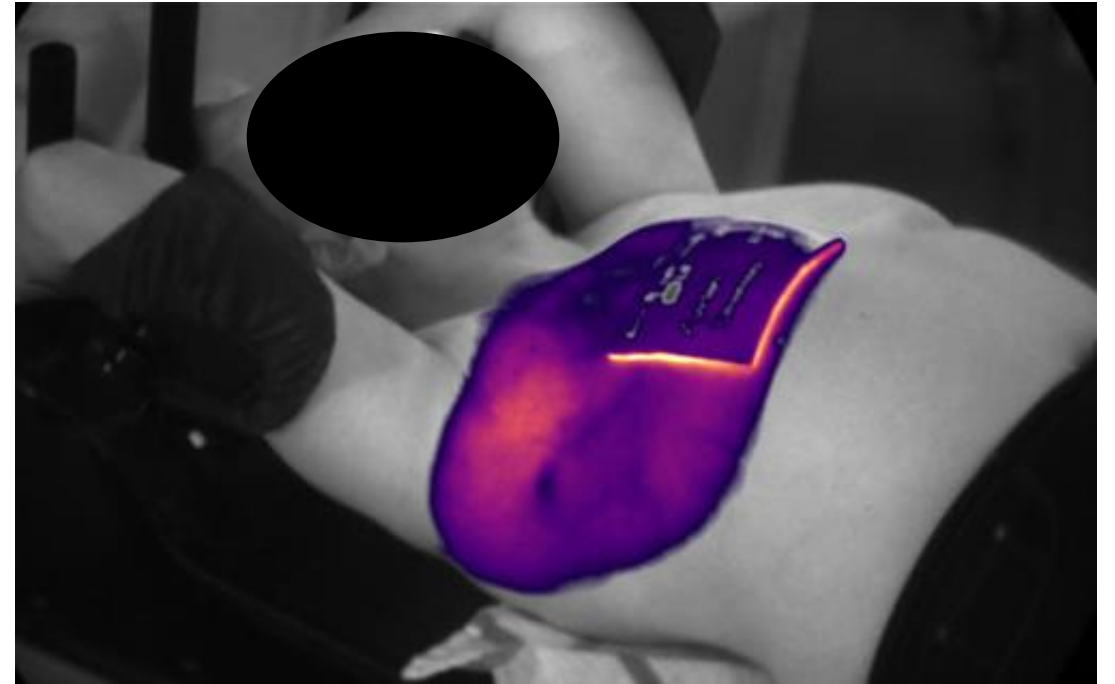
2: Dose to chin



3: Bolus placement



Most fractions

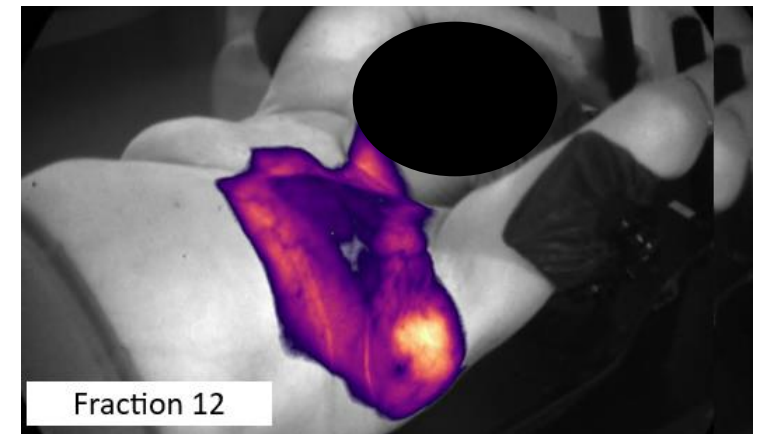
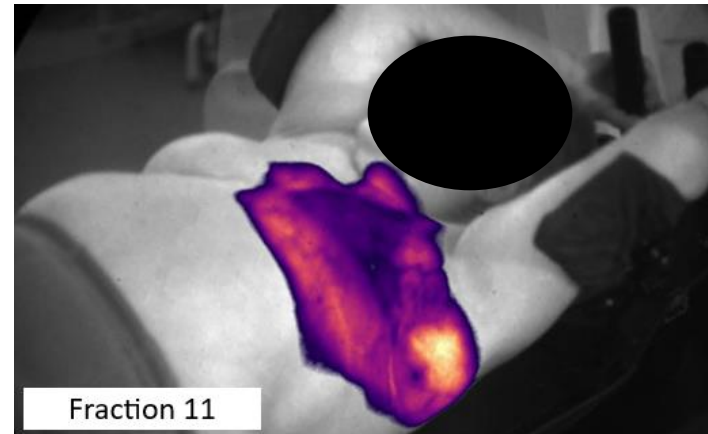
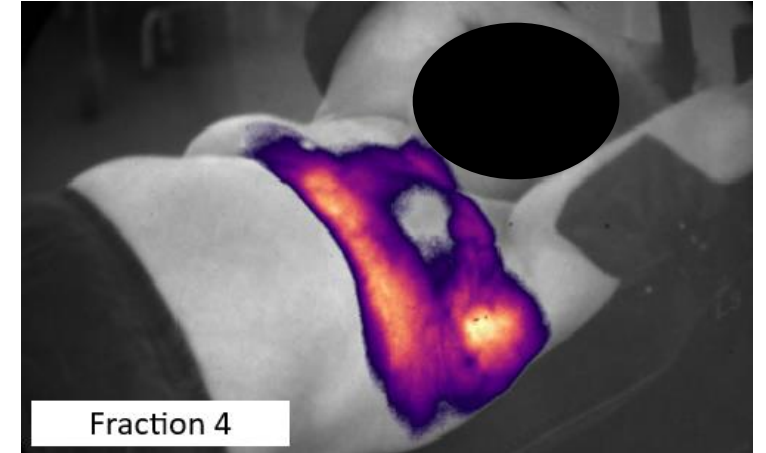
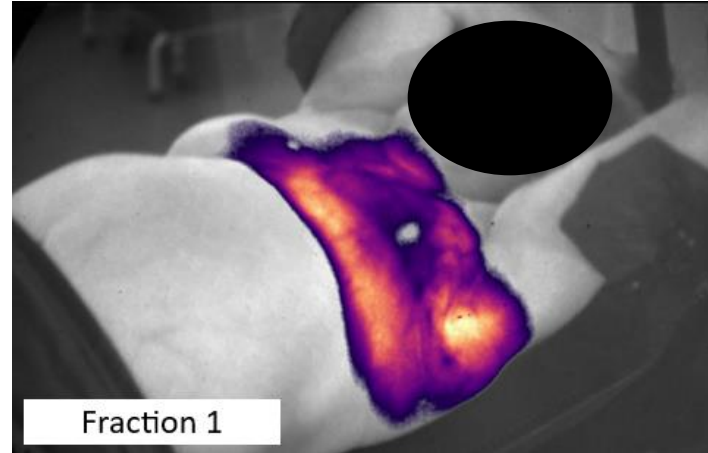


Fraction 13 (of 15)

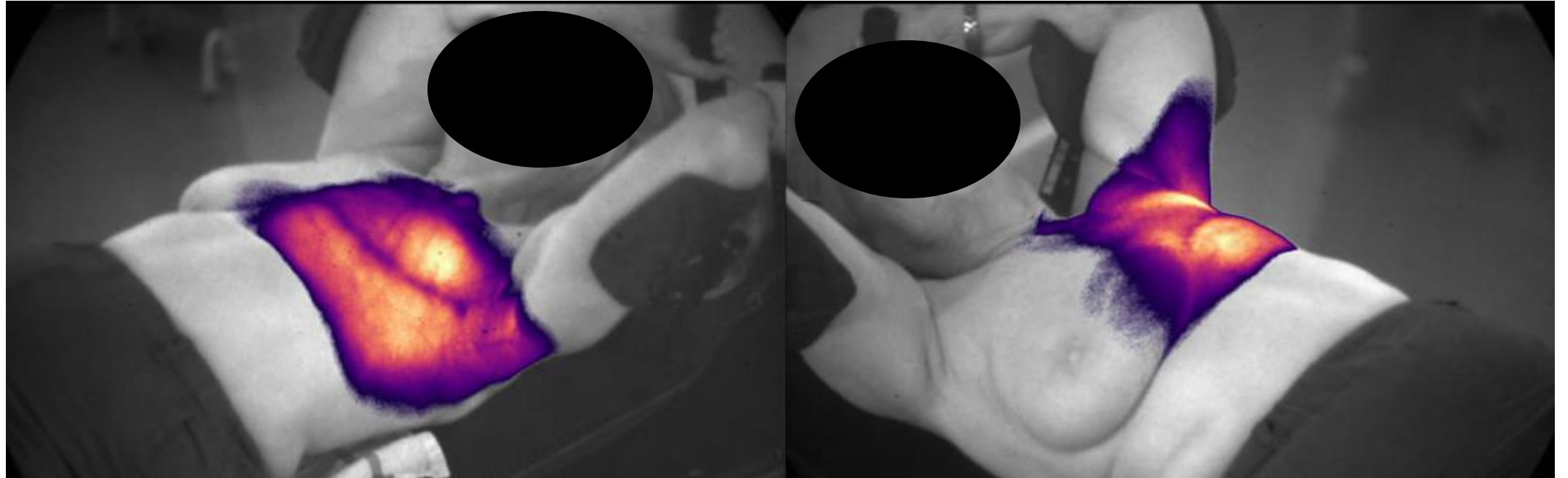
4: Breast Swelling

Fraction	Swelling (cm)	Depletion
1 (Tuesday)	0,5	
2	1,0	
3	1,4	
4	1,7	
5 (Monday)	0	Before treatment
6	0,6	
7	1,3	
8	1,5	
9	0,3	Before treatment
10 (Monday)	0	Before treatment
11		
12	0,5	
13	0	Before treatment
14		
15		

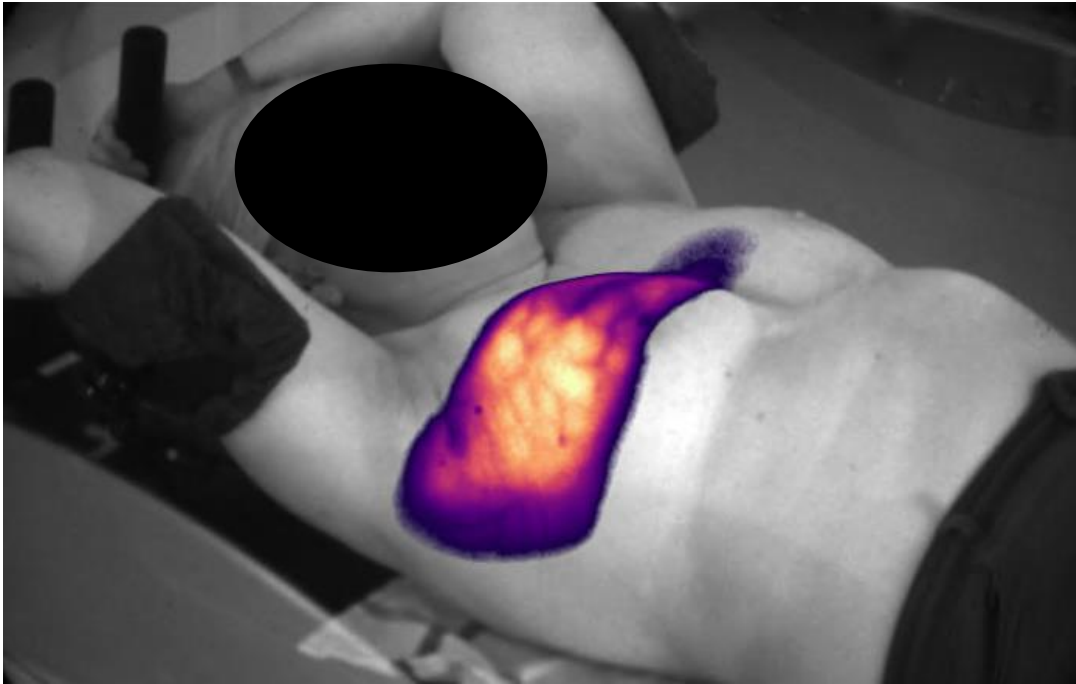
↓ VMAT (1 cm flash)
↓ Conventional



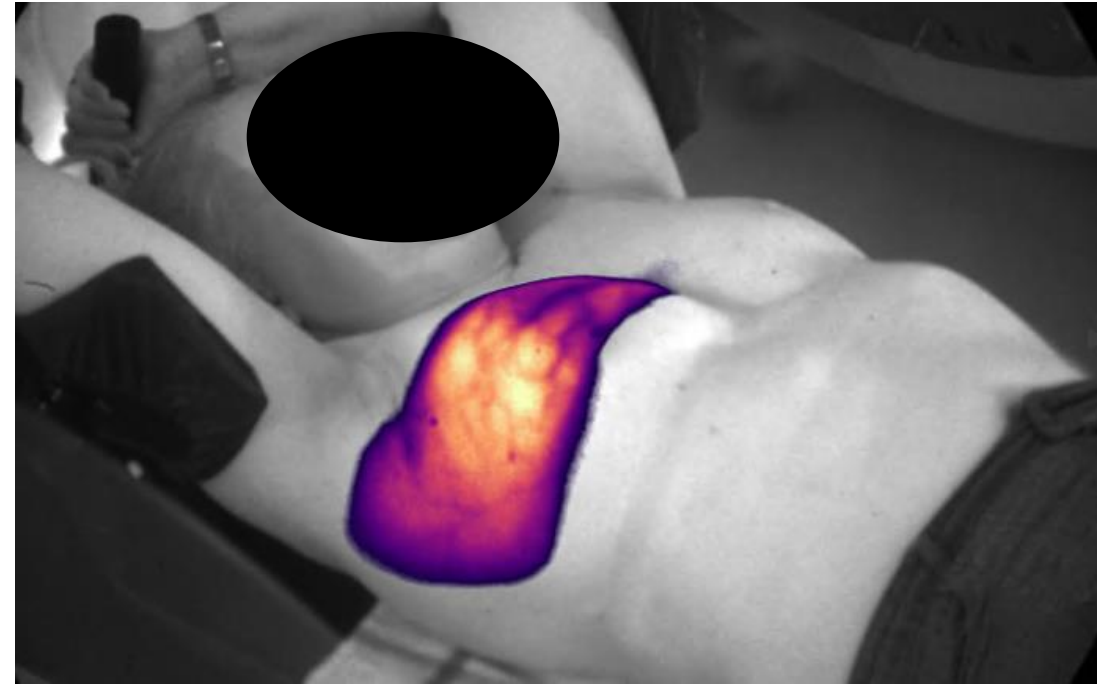
5: Arm positioning



6: Contralateral breast dose

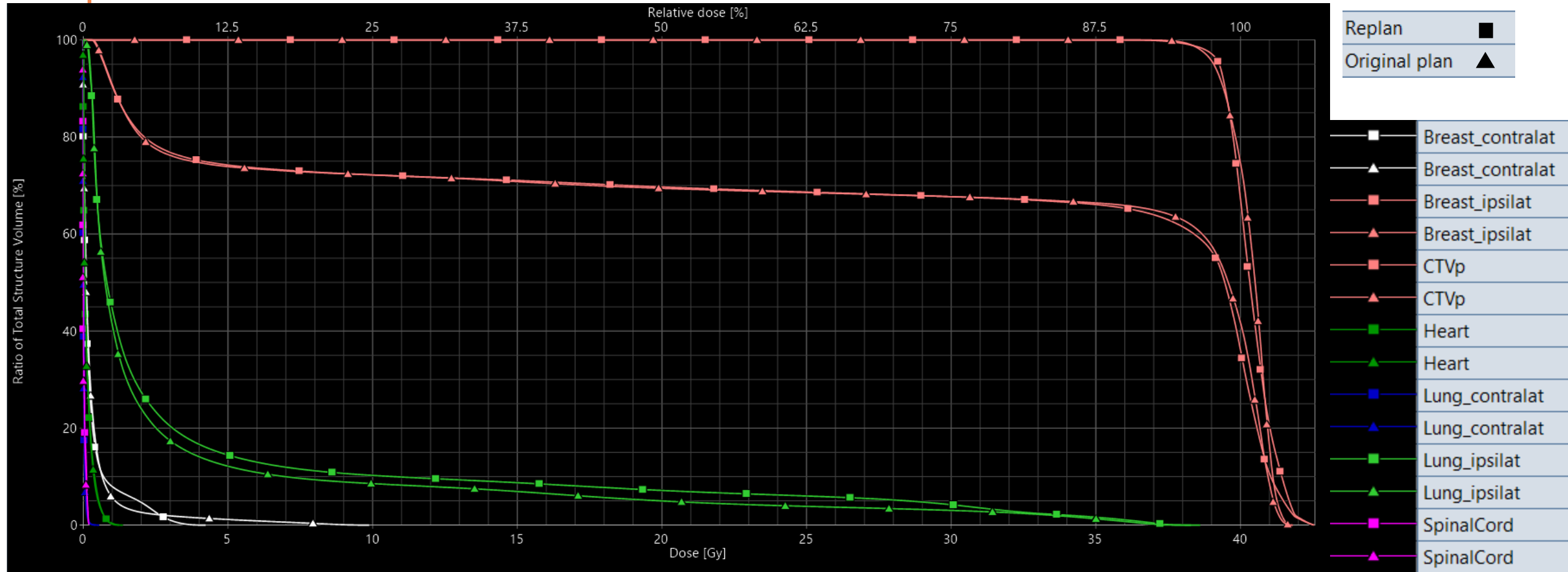


Original plan

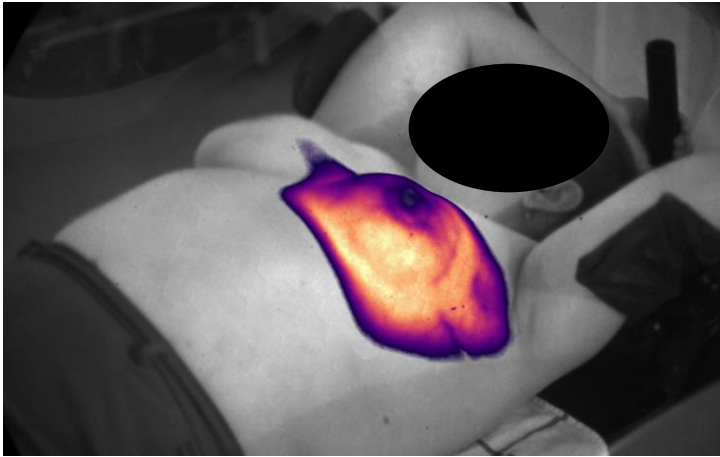


Replan

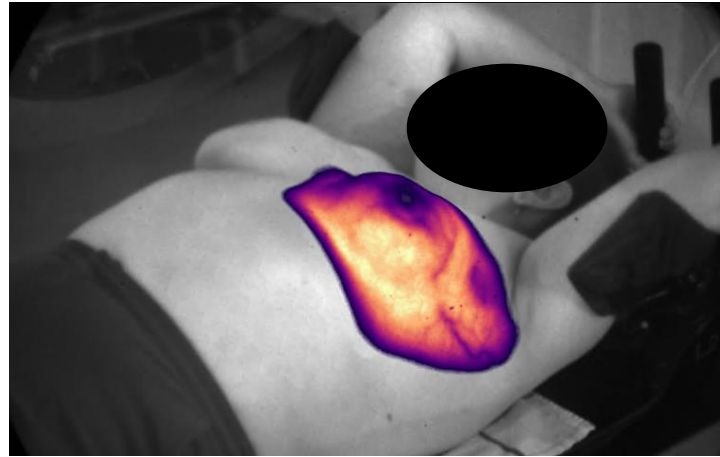
6: Contralateral breast dose



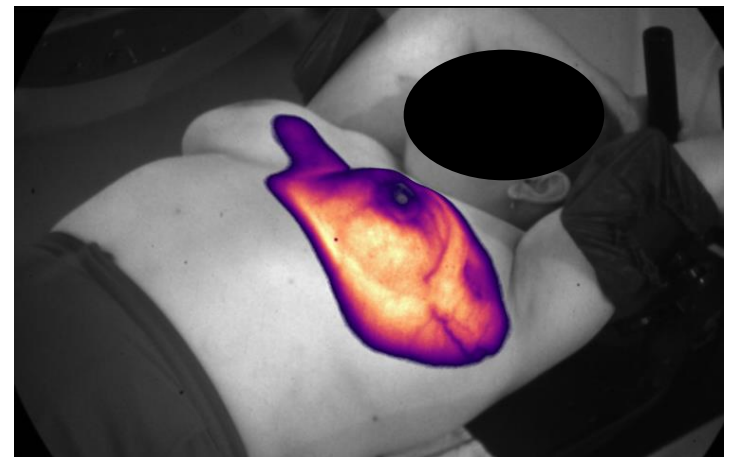
7: Contralateral breast dose



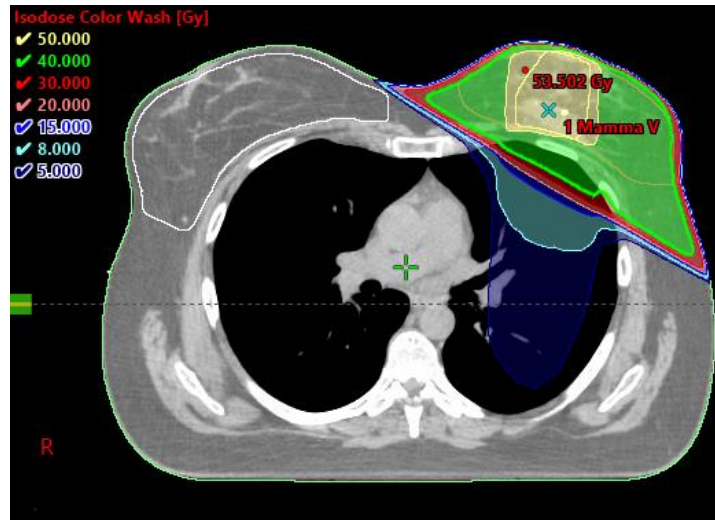
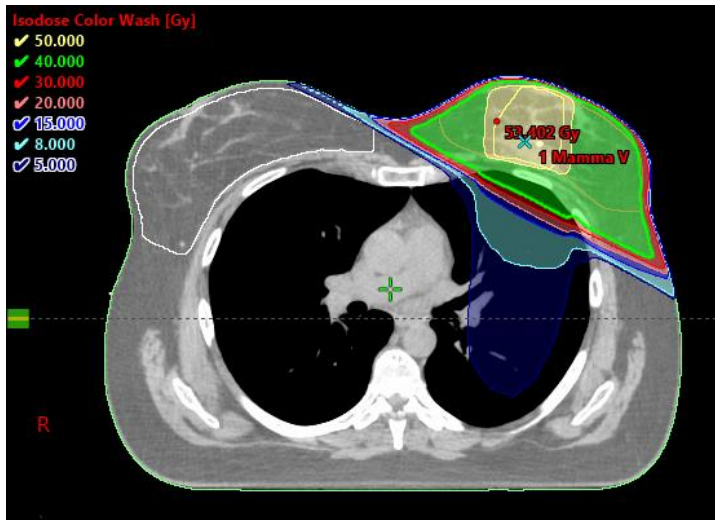
Original plan



Replan



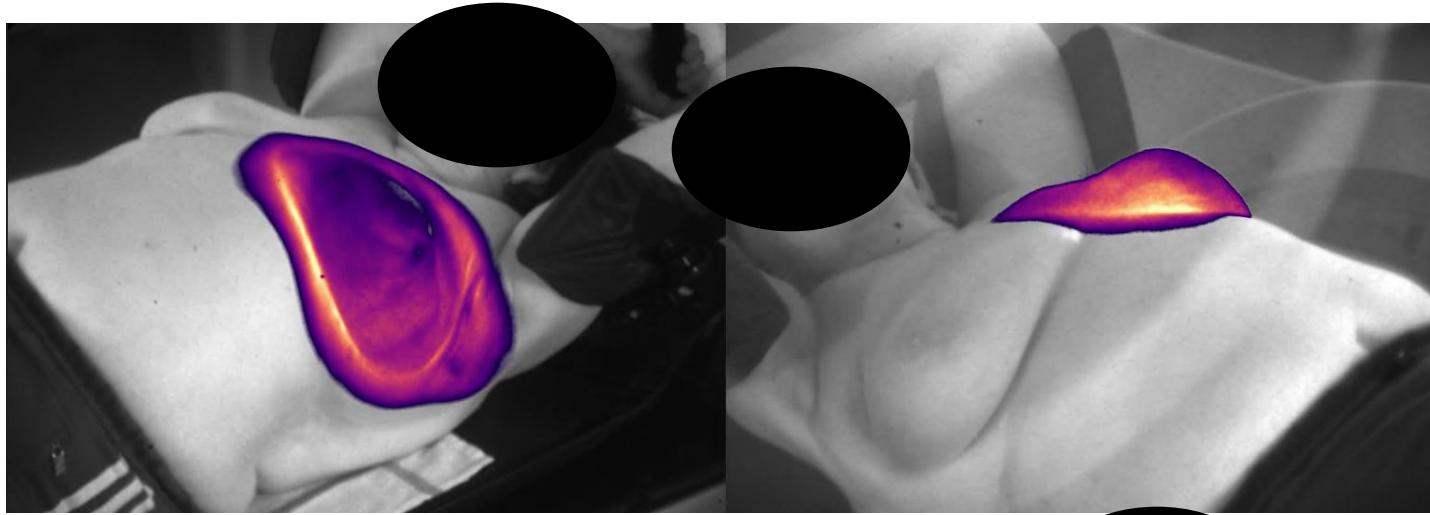
Replan day 2



7: Contralateral breast dose



8-9: Under dose- VMAT technique



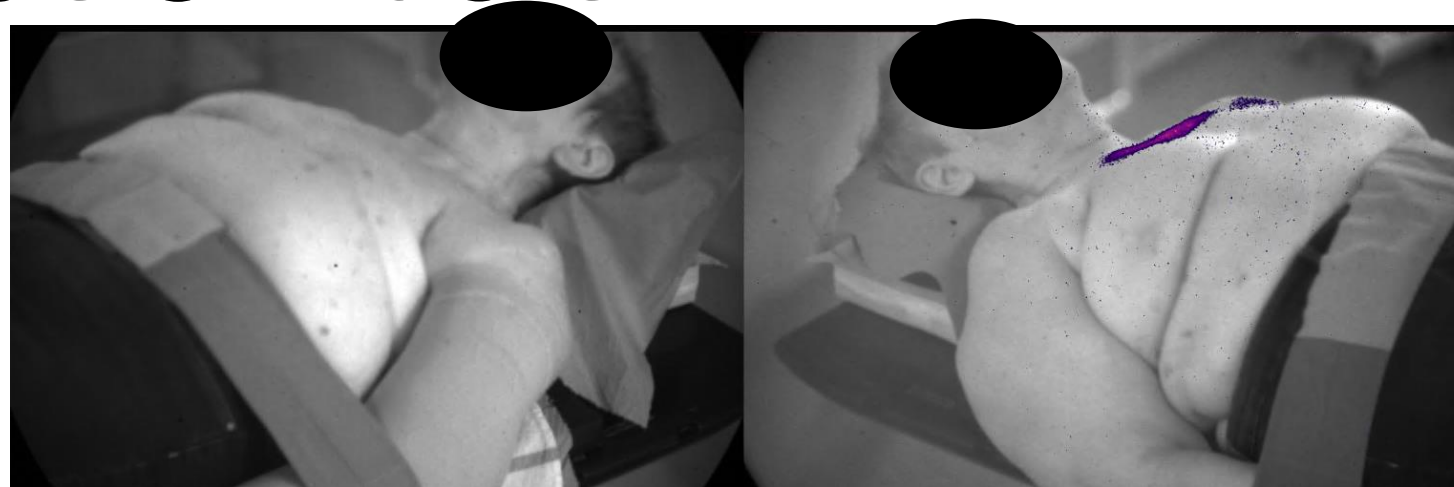


PALLIATIONS

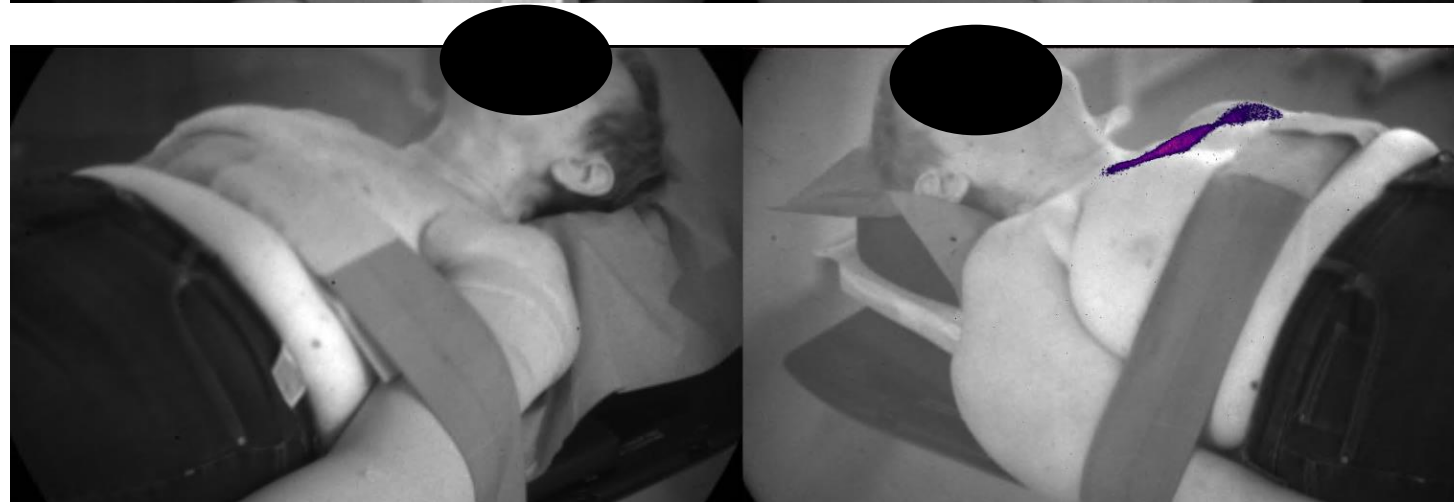
DoseRT: What have we learned

10: Fixation belt

Fraction 1

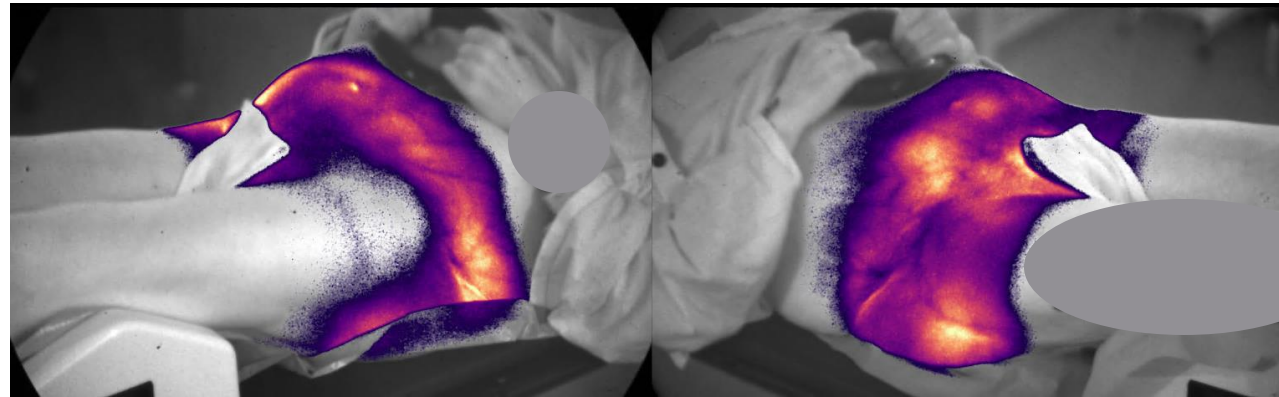


Fraction 2

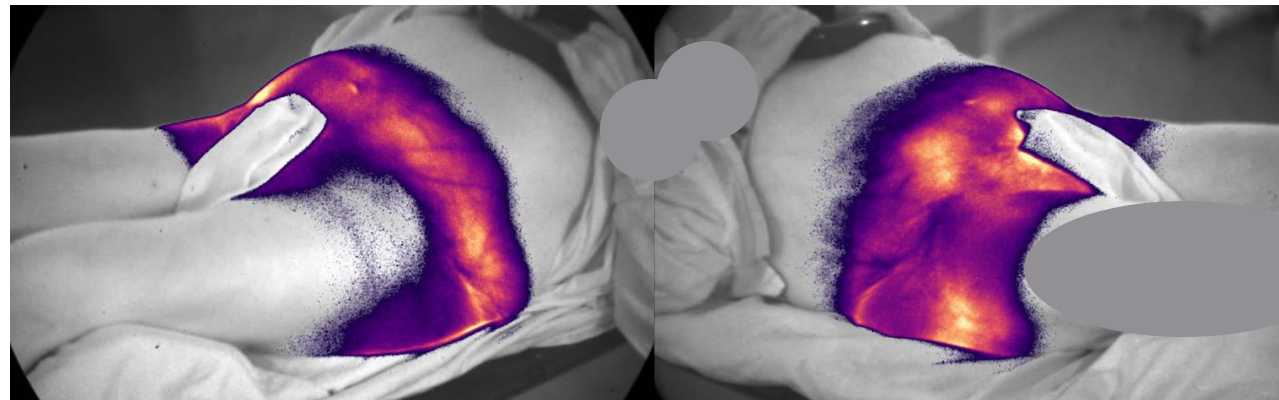


11: Arms in field

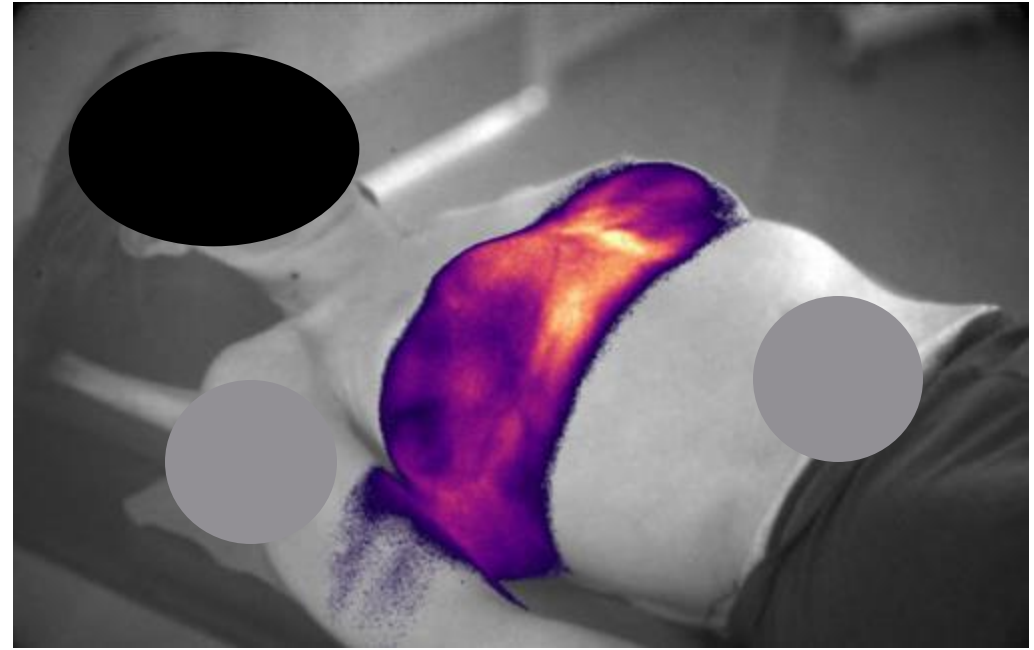
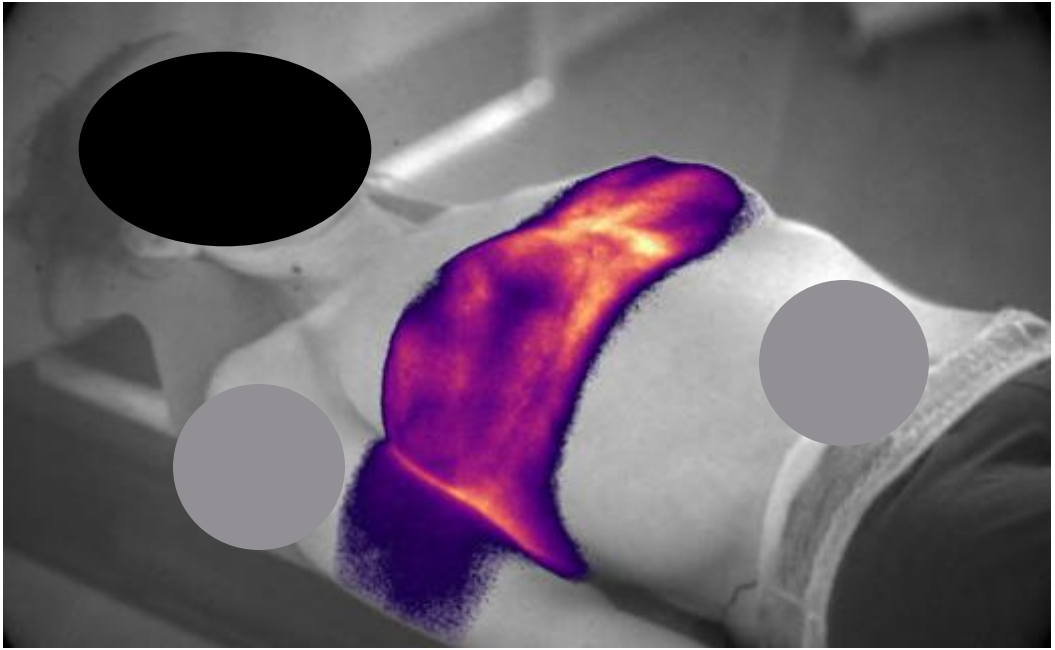
Fraction 1



Fraction 2



12: Palliation, dose to arms



+

○

THANKS

●

Bettina Skjold Jasper, bejas@regsj.dk

Arpit Saini, arps@regsj.dk

Zealand University Hospital,

Næstved, Denmark